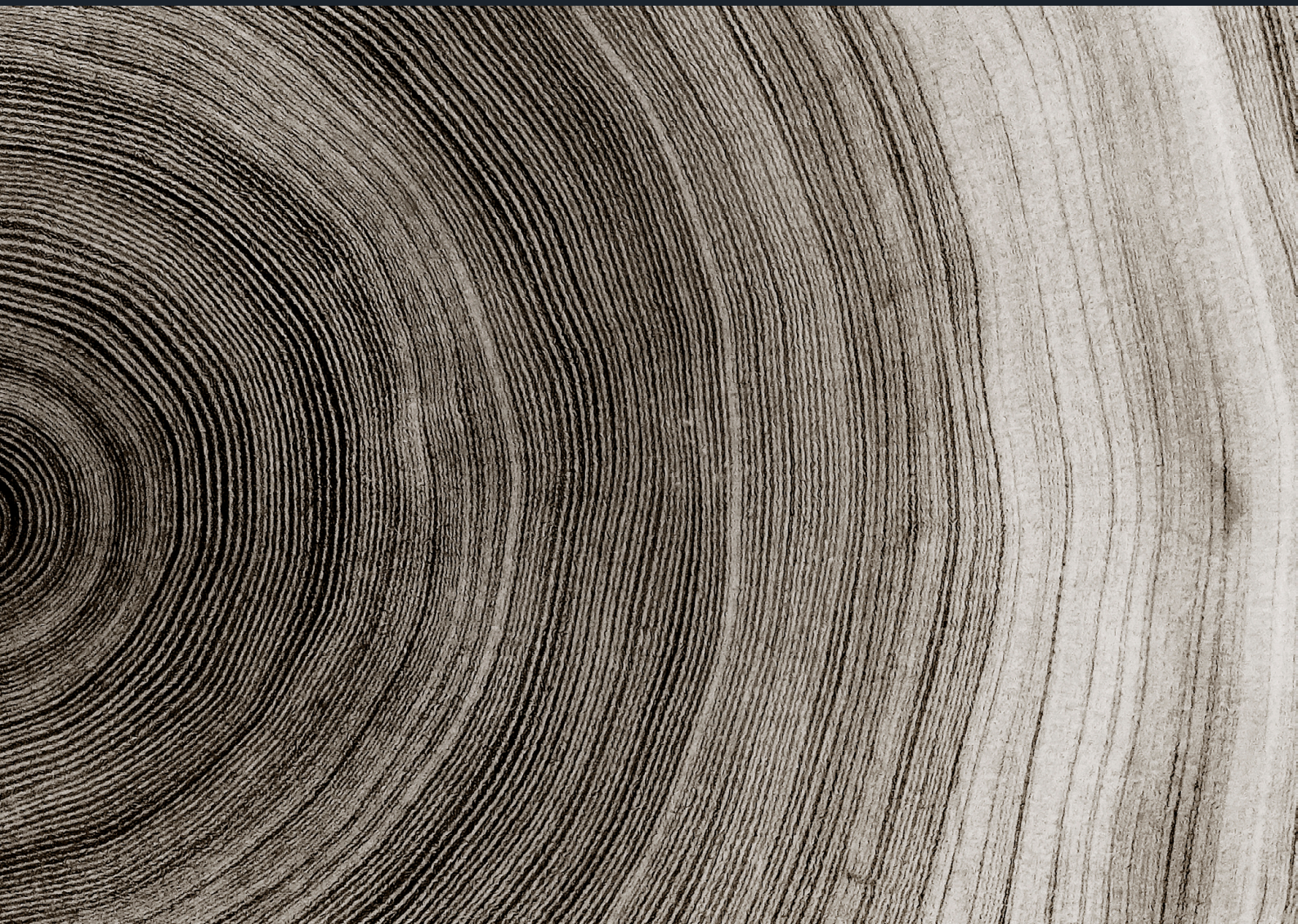


# Overview of 2025 CDP States & Regions Questionnaire

April 2025







**As the world's leading climate reporting platform and progress accountability mechanism for cities and local governments, CDP helps Disclosers understand their impact and act. Reporting is the first step towards effective and tangible climate action.**

CDP's questionnaires evolve annually to push ambition further, to align with the latest existing science and robust reporting frameworks globally, and support local governments, states and regions, public authorities, companies and financial markets to transition in line with a 1.5°C, nature-positive world.

CDP's States and Regions questionnaire enables states and regions to measure, manage and disclose their environmental impact and report to multiple campaigns and initiatives. The States and Regions questionnaire includes a Forest module which allows state and regional governments to report data on all relevant drivers of deforestation and/or forest degradation within their jurisdiction.

---

## Questionnaire Structure

States and regions are requested to respond to questions across six modules – Governance, Assessment, Targets, Planning, Actions and Forest.

### Governance

- Oversight of climate issues, opportunities and equity, multi-level governance and collaboration.

### Assessment

- Risk and Vulnerability Assessment
- GHG Emissions Inventory
- Sector-specific Data

### Targets

- Adaptation Goals
- Emissions Reduction Targets
- Sector-specific Data

### Planning

- Climate Action Plan(s)

### Actions

- Adaptation Actions
- Mitigation Actions

### Planning

- Forest (States & Regions only)



## Connection to Other Frameworks, Projects and Initiatives

CDP serves as a one-stop shop for reporting your environmental data, allowing your state or region to report to- and participate in- multiple global and regional frameworks, projects and initiatives.

The States and Regions questionnaire is aligned with the following frameworks, projects and initiatives:

- EU Mission on Adaptation to Climate Change
  - GCF Task Force Manaus Action Plan
  - NetZeroCities – Mission Cities
  - Race to Resilience
  - Race to Zero
  - Regions Adapt
  - Science-Based Targets
  - Sustainable Development Goals
  - Task Force on Climate-related Financial Disclosures (TCFD)
  - Under2 Coalition
- 

## Key Returning Features & Experience

- **How to access the Portal:** When the Portal opens for responding, disclosers will receive an email with instructions on how to access and set up the questionnaire and start reporting.
  - **Questionnaire stability:** Minimal changes to question text and response options.
- 

## Key Returning Features & Experience

- **Forest module:** In 2025, CDP is expanding those invited to report to the Forest module to include all states and regions globally.
- **The Coalition for High Ambition Multilevel Partnerships (CHAMP)** for Climate Action was launched at COP28 and has been endorsed by 75+ national governments. It is a commitment taken by national governments on a new way of working in partnership with their subnational governments to develop climate and nature targets and strategies with strong subnational involvement and content, and to support local level action. CDP is working with a range of organizations to support CHAMP endorsers. Disclosers can share data with multiple initiatives, including CHAMP, in just one click through their CDP States & Regions Questionnaire submission.

Additional details on question-level changes are available in the [2025 Questionnaire Changes Map](#) in the [CDP Help Center](#).

**CDP Worldwide**

60 Great Tower Street  
London  
EC3R 5AZ  
Tel: +44 (0) 203 818 3900  
@cdp  
[www.cdp.net](http://www.cdp.net)

---

## About CDP

CDP is a global non-profit that runs the world's only independent environmental disclosure system. As the founder of environmental reporting, we believe in transparency and the power of data to drive change. Partnering with leaders in enterprise, capital, policy and science, we surface the information needed to enable Earth-positive decisions. We helped more than 24,800 companies and almost 1,000 cities, states and regions disclose their environmental impacts in 2024. Financial institutions with more than a quarter of the world's institutional assets use CDP data to help inform investment and lending decisions. Aligned with the ISSB's climate standard, IFRS S2, as its foundational baseline, CDP integrates best-practice reporting standards and frameworks in one place. Our team is truly global, united by our shared desire to build a world where people, planet and profit are truly balanced.

Visit [cdp.net](http://cdp.net) or follow us @CDP to find out more.

---