
CDP Cities

CDPとは? ※旧カーボンディスクロージャープロジェクト



CDPは2000年に設立された国際的な環境非営利組織であり、人々と地球にとって健全で豊かな経済を保つことを目的に活動しています。



CDPは世界的な情報開示システムを運営しています。これによって、企業、都市・地域が環境影響を計測・管理することができます。



世界で最も包括的な自主的報告データによって、世界経済においてCDPは環境報告のグローバルスタンダードとなっています。



世界中の投資家、購買企業、政策決定者は、CDPのデータ、分析を活用し、情報に基づいた意思決定を行っています。



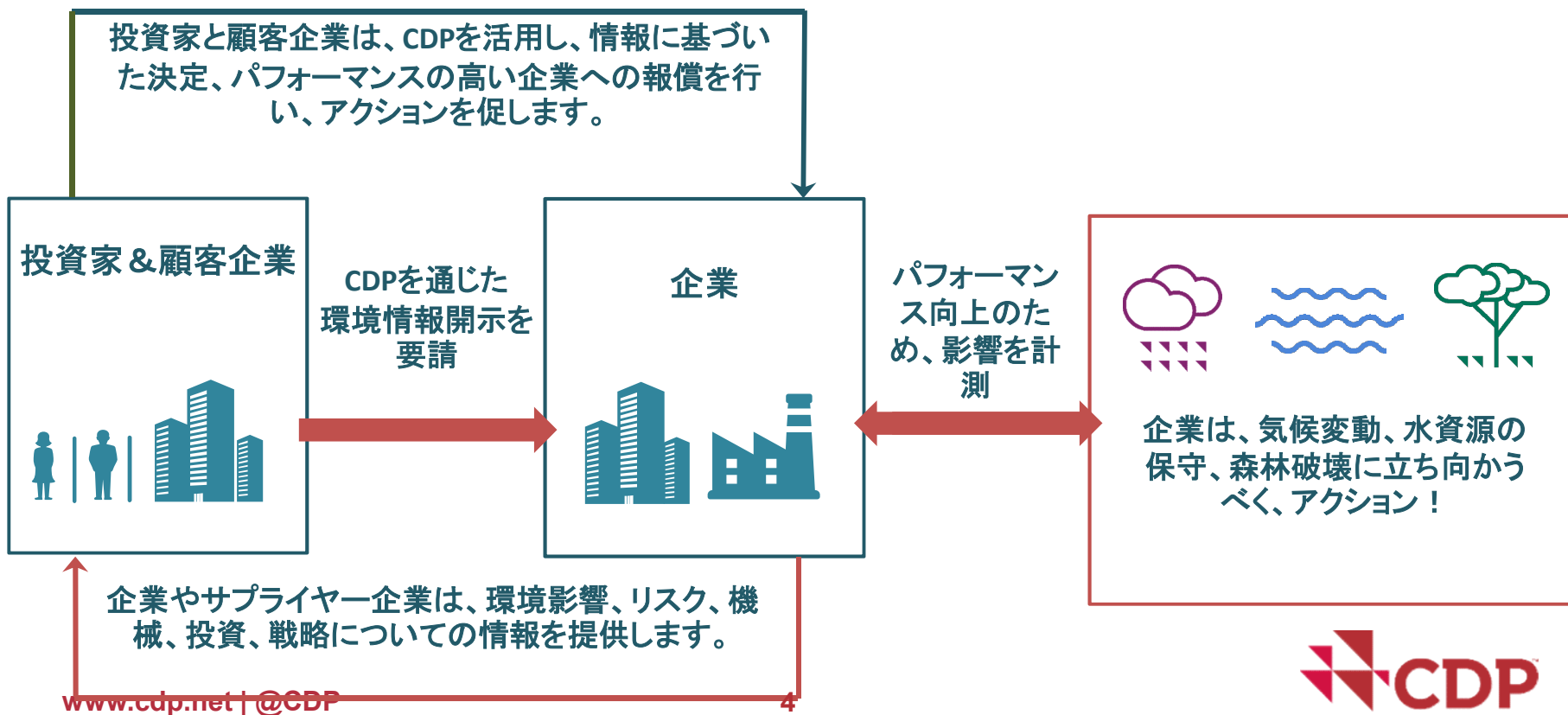
世界に広がるCDPネットワーク



- ▼ CDPは国際機関であり、地域オフィスと地域パートナーは50か国に存在します。
- ▼ CDPの地域オフィス所在地:
 - ▼ 英国 150名以上
 - ▼ ヨーロッパ(ドイツ)40名以上
 - ▼ 北米 40名以上
 - ▼ 中南米、日本、インド、中国、香港に40名以上

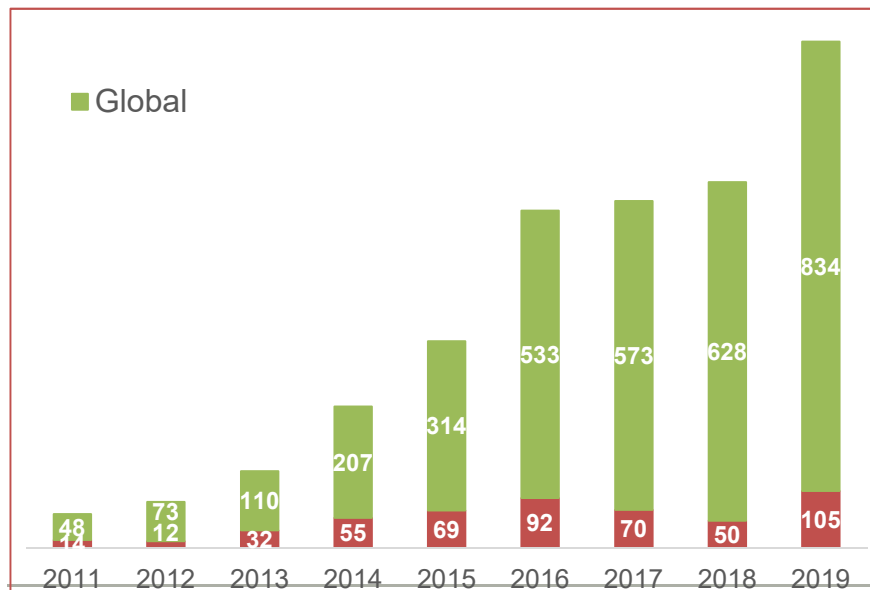


CDP情報開示の仕組み

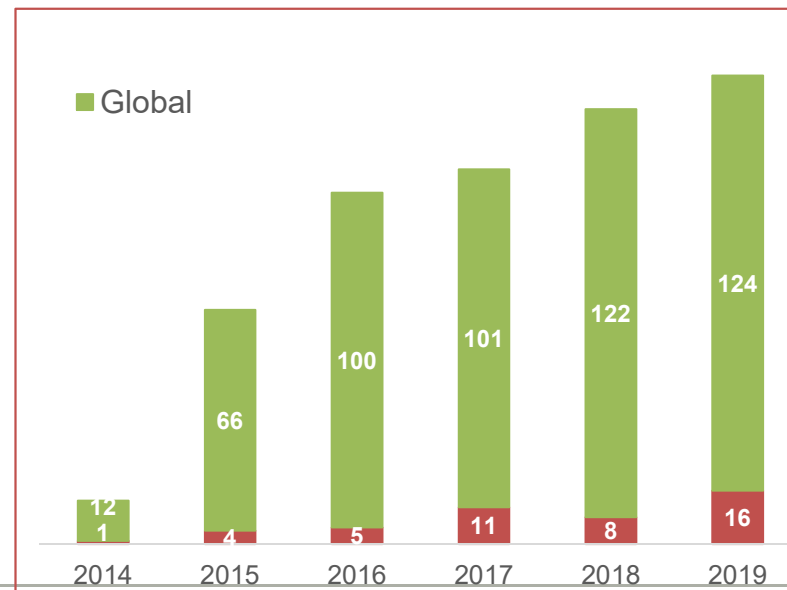


CDPCitiesの開示都市は年々増加

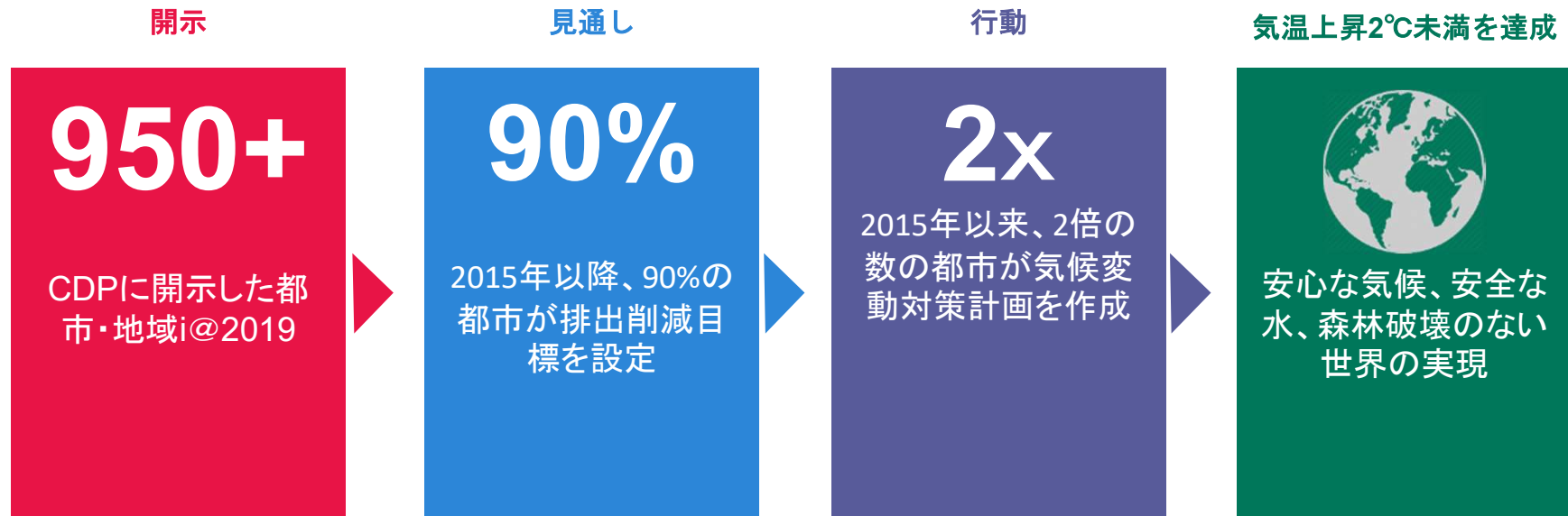
都市



州と地域



都市はCDPにデータを開示することで気候変動対策を推進



なぜ都市はCDPで情報開示するのか

リーダーシップ

Commit to the Compact of Mayors through CDP to showcase your leadership and innovation, using international standards.



Climate action data reported to CDP is showcased on the UN's Non-State Actor Zone for Climate Action (NAZCA) website.

CDPCitiesツールの活用

- Engage other city departments
- Track your city's progress annually
- Compile all your environmental data in one place

世界のネットワークへのアクセス

Join an ambitious global group who are setting bold commitments to act on climate change.



Over 570 cities,
Over 100 states & regions,
Over 6,000 companies
report to CDP.

企業との関わり

US\$52 bn
the total cost of
1,000+
climate-related projects seeking private sector involvement

見通しと分析

- Provides you with all public data
- Receive an evaluation of your response
- Benchmark your performance against peers
- Find areas of opportunity

気候変動ファイナンス

Understand how major investors are engaging with environmental issues.



Connect to
800+ private investors
worth more than
\$100 trillion in assets

容易な報告

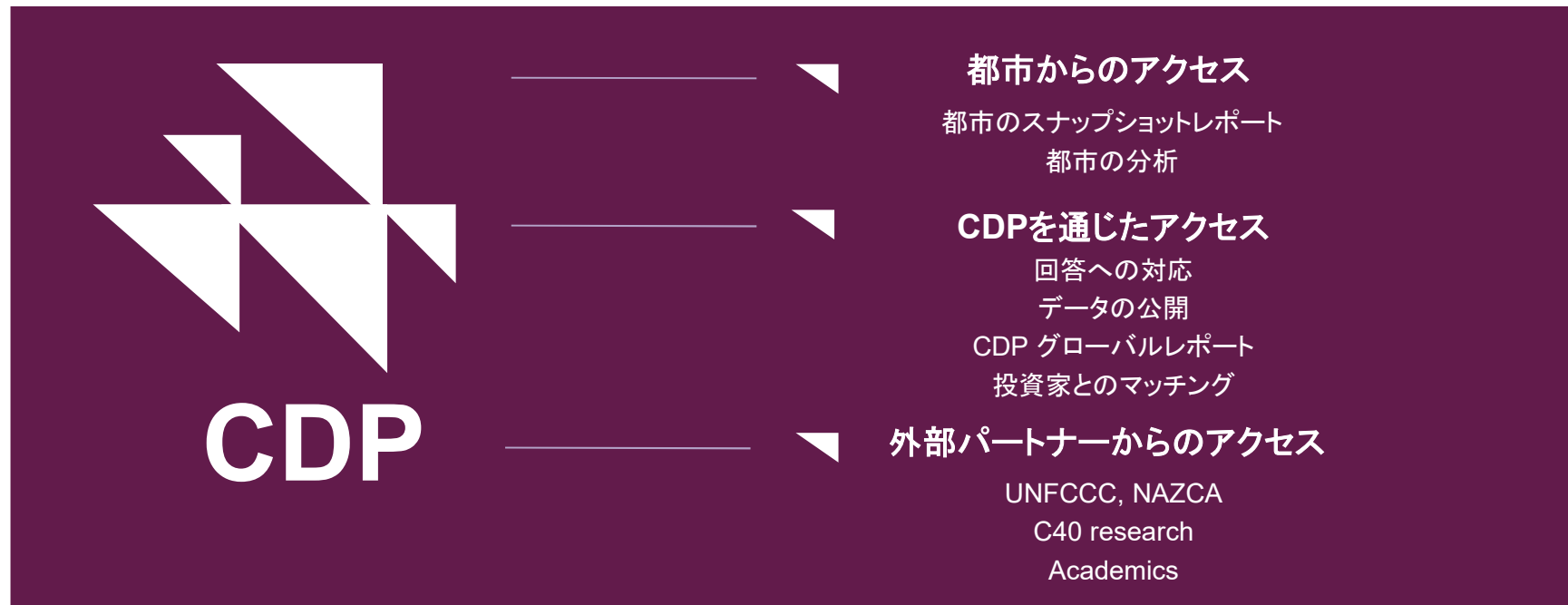
- Free and voluntary to report
- No methodology prescribed
- Public or private disclosure

気候変動対策の向上

By reporting to CDP we are able to identify areas where we are need to implement strategies and ensure that adequate plans and actions are developed.

Pietermaritzburg,
South Africa

CDP cities のデータはこれらのツールを用いて自由に利用可能



2. スコアリングのフィードバック



3. 都市の気候変動対策をハイライト



2014



2016



2017



2015



2016



2018

4. オープンデータへ自由なアクセス

▼ 2017年の各都市の排出量



5. 関係者を通じた投資家とのマッチング

都市のCDPへの情報開示

CDPはフォームを通じて追加的なプロジェクトを収集

CDPは、都市のプロジェクトをマッチメーカーダッシュボードに開示

IN 2017, 362 CITIES REPORTED **1,045 CLIMATE-RELATED PROJECTS** TO CDP, REPRESENTING OVER \$52 BILLION USD.



提携パートナーズ

世界							
欧州							
北アメリカ							
南アメリカ							
アジア太平洋							

CDP cities質問書の対象トピック



ガバナンスとデータ管理方法



気候変動の影響、脆弱性、適応



都市の排出量と緩和策

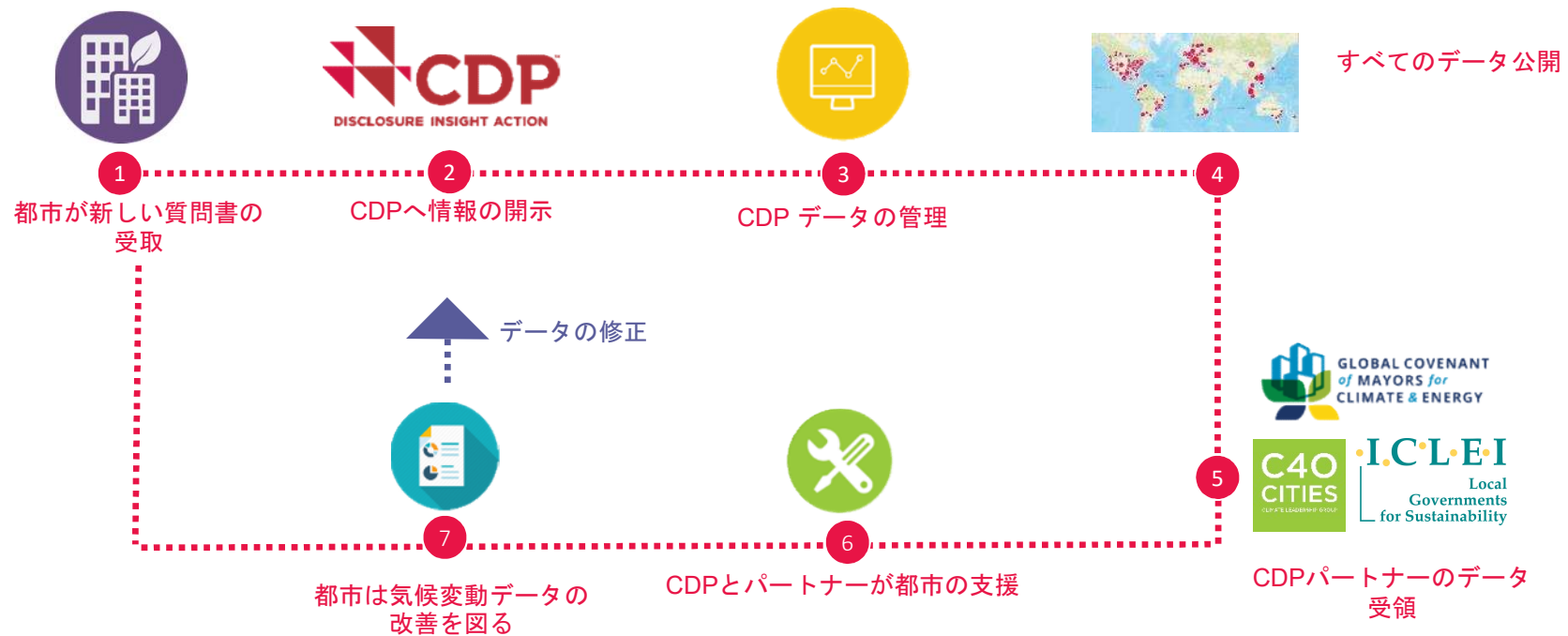


機会



エネルギー、食品、輸送、水、森林

都市の活動を促進するに役立つデータの提供プロセス



スナップショットレポートは都市へのフィードバックを提供

- 2ページの概要と各都市の対応に関するフィードバック
- 地域の平均値との比較
- 得点の説明と改善のためのリソースの提供
- 改善活動に向けた内部チームの支援

City name

This snapshot report presents the score that [City Name] received for its response to CDP's 2018 questionnaire. CDP uses the scoring methodology to incentivize cities to measure and manage environmental impacts. Responses are scored by CDP and CDP's scoring partner ADEC, using the 2018 CDP Cities Scoring Methodology. Scores are private to cities although CDP will recognize and reward the highest scoring cities.

Scoring

Score	Scoring band	Regional Average Score	Global Average Score
A-	Leadership	80	300

The bar chart above shows the count of scores achieved by cities in North America. The score for [City Name] is shown in red.

The bar chart above shows the count of scores achieved by cities globally. The score for [City Name] is shown in red.

Scoring band explanation

A Leadership city demonstrates best practice standards across adaptation and mitigation, has set ambitious but realistic goals and made progress towards achieving those goals. Cities in the Leadership band have strategic, holistic plans in place to ensure the actions they are taking will reduce climate impacts and vulnerabilities of the citizens, businesses and organisations residing in their city.

	Adaptation	City-wide emissions	City-wide emissions reductions	Climate & social risk	Opportunities	Water supply
City Name	A-	A	D	A	B	C
North America Average	D	D	D	C	C	D
Global Average	D	D	D	D	D	D

Find more about CDP Cities at <https://www.cdp.net/en/cities>

Information reported

This panel indicates what information was provided by Ville de Montreal in the CDP's 2018 questionnaire which was used to determine your score. It also highlights some key points disclosed by cities globally and within your region.

Information disclosed by Ville de Montreal	% North America	% Globally
Risk/Vulnerability Assessment	51%	45%
Climate Adaptation Commitment	70%	58%
Climate Adaptation Plan	35%	33%
Climate Action Plan	56%	42%
City-wide GHG Emissions Inventory	74%	54%
City-wide Emissions Reduction Target	65%	46%
Renewable Energy Target	43%	31%

Your city is committed to the Global Covenant of Mayors for Climate & Energy

Your city is committed to reduce its emissions by 30% by 2020.

Transparency
Your city disclosed publicly

How to improve your city's score

Sections Questionnaire	Next steps Leadership band
Introduction and governance	Consider sharing your process for integrating sustainability into mainstream activities by creating a case study of your city. Join international city networks to pass on the knowledge your city has to others looking for best practice leadership.
Hazards and Adaptation	Continue regular update and monitoring of risk assessment involving vulnerable populations. Commit to ambitious adaptation targets to ensure vulnerable populations are protected in future. Consider the interaction between your adaptation and mitigation actions.
Opportunities	Cities can showcase climate resilient infrastructure projects to private sector investors through our Matchmaker Initiative.
City-wide Emissions	Ensure regular update and review of emissions inventory. Where changes occur in the methodology or more data is obtained, be sure to update previous inventories so data is comparable over time. Consider undertaking a consumption-based inventory for the city, which identifies GHG emissions from goods and services consumed within the city.
Energy and Emissions reduction	Many cities are beginning to set emissions reductions targets that are more ambitious than the NDCs of their national governments. Carbon-neutral or zero carbon targets are increasingly being set by cities. Consider updating your city's action plan to incorporate a target aligned with or more ambitious than the Paris agreement goals. Consider developing a 100% renewable energy target.
Water	Ensure water risk is regularly assessed and incorporated into considerations when identifying emissions reduction and adaptation goals.

[Click here](#) for a more detailed explanation of the score per band for each section of the questionnaire, along with CDP's recommendation for cities who receive a Leadership (A-) band score.

Resources

Benchmark Against Your Peers	Explore Data	Connecting to Finance
To see how your city compares to other cities, check out Cities Analytics	Explore all public information by accessing our Open Data Portal	Showcase relevant projects through our Matchmaker Program

スコアリング

スコアリングは行動を促すツール

スコアリングは、

- 各都市の回答における質・完全性・実績を示す指標
- 2018年の各都市の結果は非公開(Aリストは除く)

都市にはスコアフィードバックチャートが提供され、自分たちのスコアを把握することができます。



都市では、フィードバックのスコアを理解するための1対1の通話も提供されることがあります。



スコアリングは都市が改善すべき分野を特定するのに役立つ

都市の気候計画の
改善を支援



都市へのフィード
バック



都市のパフォーマン
スのベンチマークを
示す



回答における都市
間のギャップをハイ
ライト



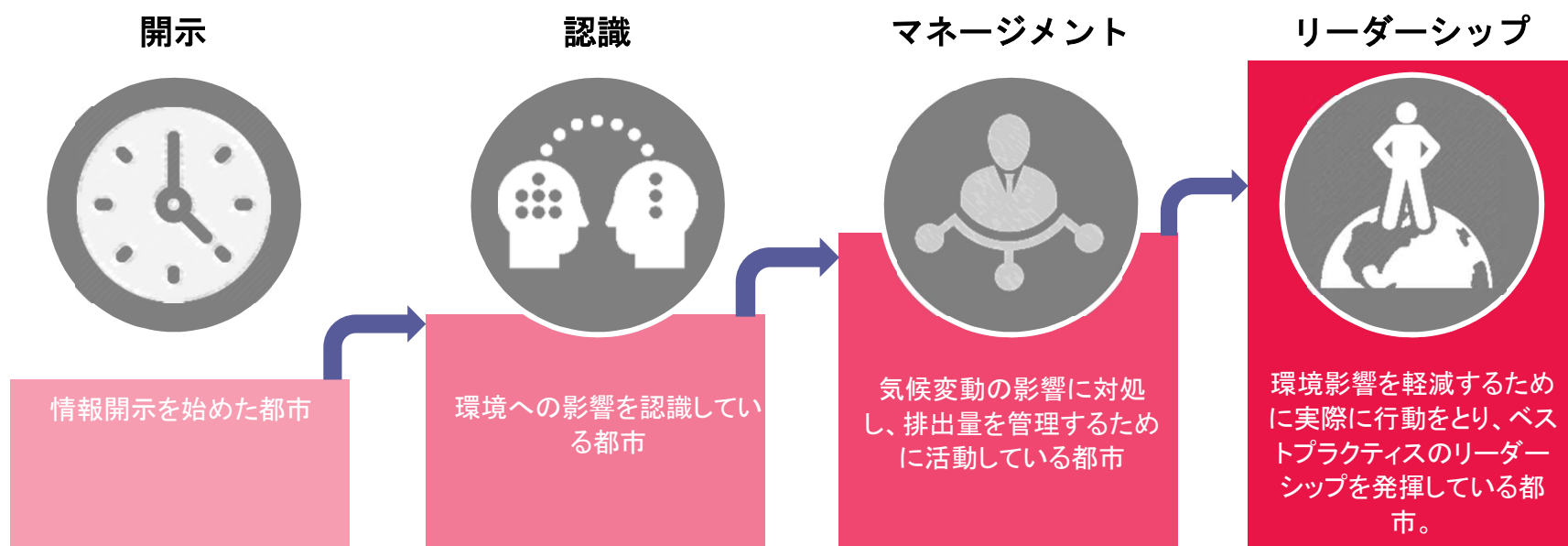
ベストプラクティスの
採用を都市に支援



次のステップを特定
し、気候変動対策を
推進



CDPの新しい採点方法



リーダーシップにおけるベストプラクティス

戦略的、総合的な計画と目標を設定し、自分たちの都市の気候変動の影響を軽減するための行動を確実にするためのベストプラクティスを示す。

- ▼ マスタープランニングにおける統合された持続可能性の実証している。
- ▼ 完全な排出量インベントリを提示し、排出量が検証されている。
- ▼ 活動と政策による排出量の削減を実証している。
- ▼ 実施された都市全体の行動計画の証拠を提示している。

Leadership	
	<p>Leadership</p> <p>Delivers a Leadership City Score which has passed all the criteria and met the goal. The city has set ambitious but realistic goals and made progress towards achieving those goals. One in the Leadership City has done so. To be a Leader, a city must have a plan to ensure the actions they are taking will reduce climate impacts and emissions of the city, its residents and organizations leading in their city.</p> <p>These nine cities do not have to achieve all of these criteria, but the number of criteria achieved will affect their score. To achieve a score in Leadership, cities must pass the threshold for Measurement and fulfil all of the essential criteria below.</p>
Essential criteria	<ul style="list-style-type: none"> • Cities must report publicly to confirm whether a Leadership level score, and must also have: <ul style="list-style-type: none"> • Climate adaptation plan covering at least the city boundary • City-wide emissions inventory • City-wide emissions reduction target
Measurement	<ul style="list-style-type: none"> • Having a public sustainability or city plan which provides risk or plan in which environmental goals are set out in the city plan • Providing evidence of the impact of sustainability goals that are integrated in the city plan
Goal	<ul style="list-style-type: none"> • Understand the scale and impact of long term risks especially those with the highest impact • Provide evidence of a city plan developed from within the last 4 years and set out a process for regular review and update
Adaptation	<ul style="list-style-type: none"> • Provide evidence of a public commitment to adapt to climate risk agreed upon by the Mayor or the local city council • Have identified actions to adapt to anticipated climate hazards and the impacts with an understanding of how the actions will reduce the city's vulnerability • Provide evidence of a city-wide adaptation plan from the last 4 years which has been implemented or is currently in implementation and covers at least the city boundary • Report the processes for regular review and update of the adaptation plan • Have identified actions to reduce the city's vulnerability of all reported hazards, describing the scope of each action and how they help to reduce the reported hazard
City Emissions	<ul style="list-style-type: none"> • Provide a full (and complete) City-wide emissions inventory, including the main Kyoto Protocol gases (CO₂, CH₄, N₂O, HFCs, PFCs, SF₆, NF₃) • Provide a full emissions calculation for the city boundary, and emissions reductions achieved through action • Emissions verified with verification methods reported • Scope 2 emissions reported • Emissions to be reported on the full inventory, and emissions reductions achieved through action • Emissions verified with verification methods reported • Scope 3 emissions reported
Strategy	<ul style="list-style-type: none"> • Have implemented a robust city-wide action plan covering at least the city boundary with processes in place for regular review and update • Have implemented emissions reduction activities and quantified the expected emissions reduced • Have a city-wide emissions reduction target (or targets) to be met by the Leadership City • Setting a long-term goal for emissions reduction (target: multiple targets) • Provide evidence of progress towards a long-term goal (or goals) for emissions reduction (target: multiple targets) • Emissions reduction target is a stretch to be achieved • Have a 100% city-wide renewable energy target (or already have 100% of the city's energy from renewables) • Current city-wide energy use is over 50% from renewables (does not include nuclear)
Note	<ul style="list-style-type: none"> • All emissions and energy data are audited with an action • Provide a detailed overview of the actions taken to reach the city-wide emissions reduction target

CDPCities2019 Aリスト

- Aリストの都市数は2018年の43から2019年には105に増加
- **日本では横浜市がAリスト入り**



地方公共団体のCDPCities回答メリット

- ▼国際的な取組のアピール、水準の比較、情報の共有
(日本および各地公体において)
- ▼RE100との連携
- ▼国際的な投資やサポートを呼び込む機会
- ▼他の枠組み(GCoM、C40、ICLEI)との連携・対応
- ▼国内外の企業との連携、投資の呼び込み