

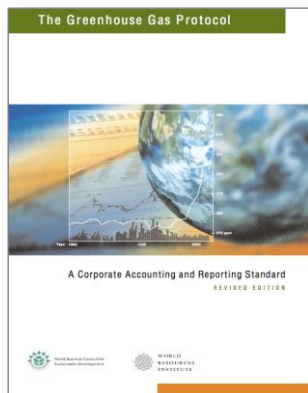


# GREENHOUSE GAS PROTOCOL LAND SECTOR AND REMOVALS INITIATIVE

6 April 2021

*Photo: Sarah Alix Mann, WRI*

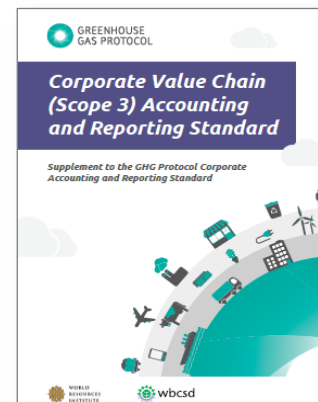
# Greenhouse Gas Protocol standards for the private sector



**Corporate  
Standard**



**Scope 2  
Guidance**



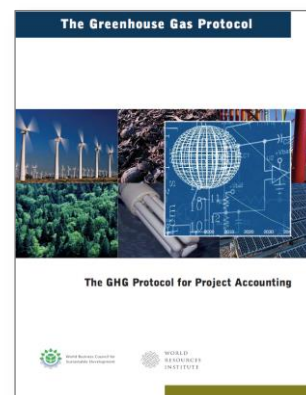
**Corporate Value Chain  
(Scope 3) Standard**



**Agriculture  
Guidance**



**Product  
Standard**



**Project  
Protocol**



**Policy and Action  
Standard**

## Current guidance for the land sector

- Limited guidance for corporate GHG inventories on accounting for emissions and removals from land use, land use change and forestry
- Existing guidance:



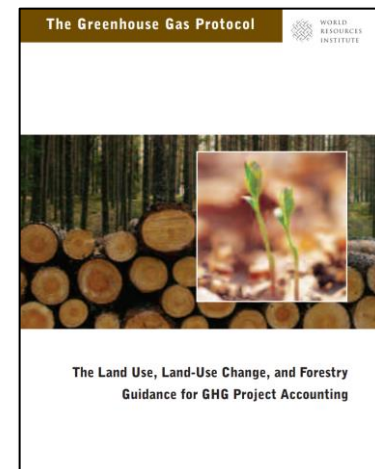
**Agriculture  
Guidance**



**Product Standard  
(Appendix B)**



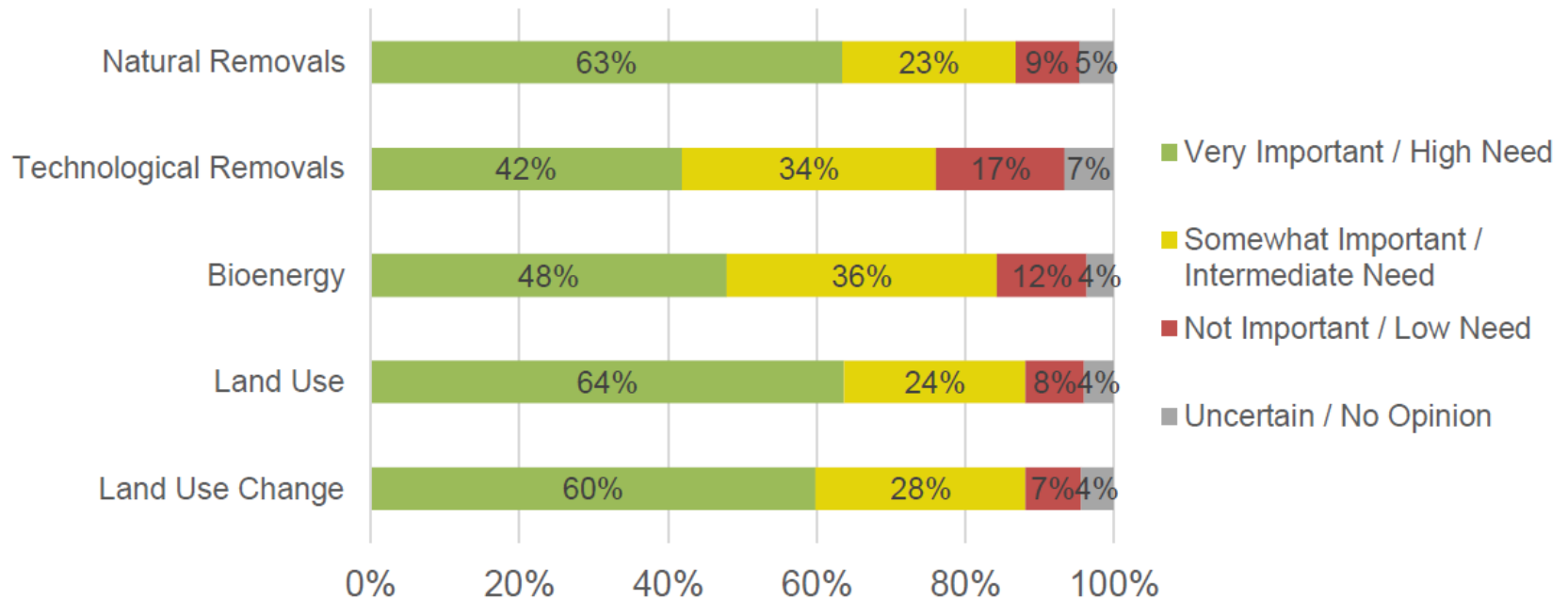
**Mitigation Goal  
Standard  
(Chapter 6)**



**LULUCF Guidance for  
Project Accounting**

## Guidance required by business

**Demand for guidance by topic**

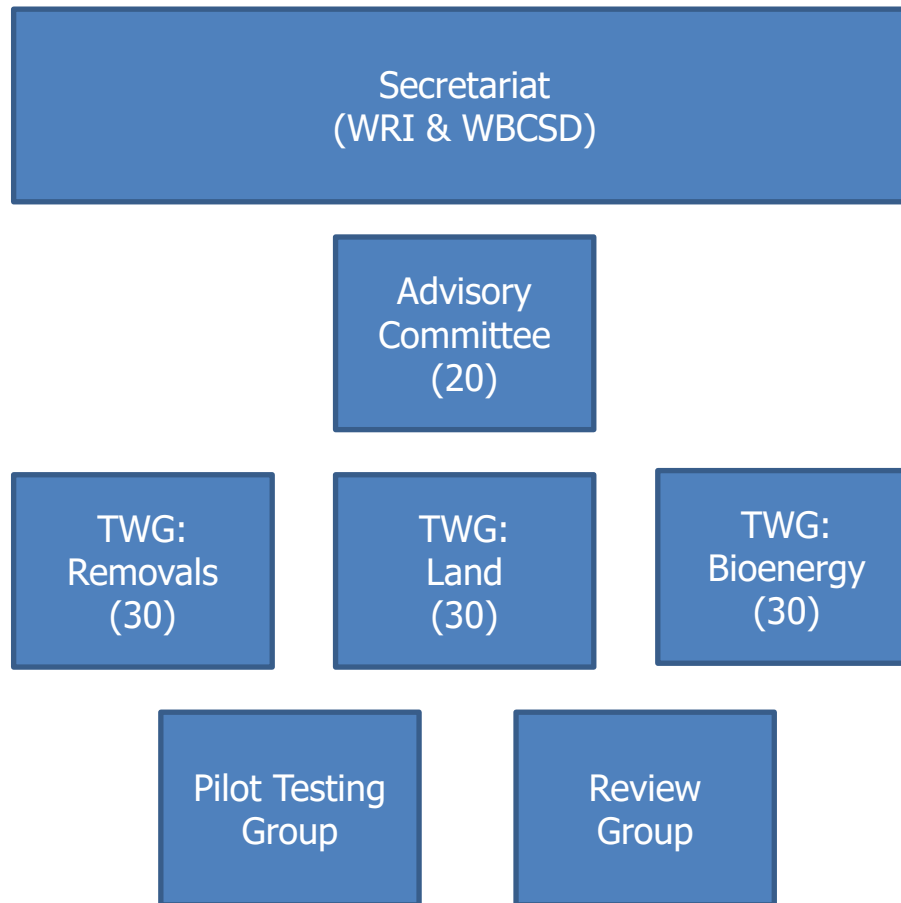


# GHG Protocol Land Sector and Removals Guidance

- Corporate-level greenhouse gas accounting and reporting guidance for:
  - Land use and management
  - Land use change
  - CO<sub>2</sub> removals and storage (biogenic and technological)
  - Biogenic products across the value chain
- Value chain approach building on Corporate Standard and Scope 3 Standard
- Help companies:
  - Inform mitigation strategies
  - Set targets and track performance
  - Report GHG inventories and progress toward targets
  - Support Paris Agreement goal of balancing emissions and removals globally by mid-century



# Multi-stakeholder development process



## CO<sub>2</sub> Removals Guidance

- **Removal:** The transfer of greenhouse gases from the atmosphere to storage within a pool.
- Guidance across carbon pools
  - **Land-based carbon pools:** Aboveground biomass, belowground biomass dead organic matter and soil
  - **Product carbon pools:** Biogenic and technologically removed CO<sub>2</sub>
  - **Geologic carbon pools:** Dedicated CO<sub>2</sub> storage and enhanced oil recovery
- Quality criteria for CO<sub>2</sub> removals
  - Storage duration
  - Ongoing monitoring
  - Traceability / data
  - Uncertainty
  - Reliability

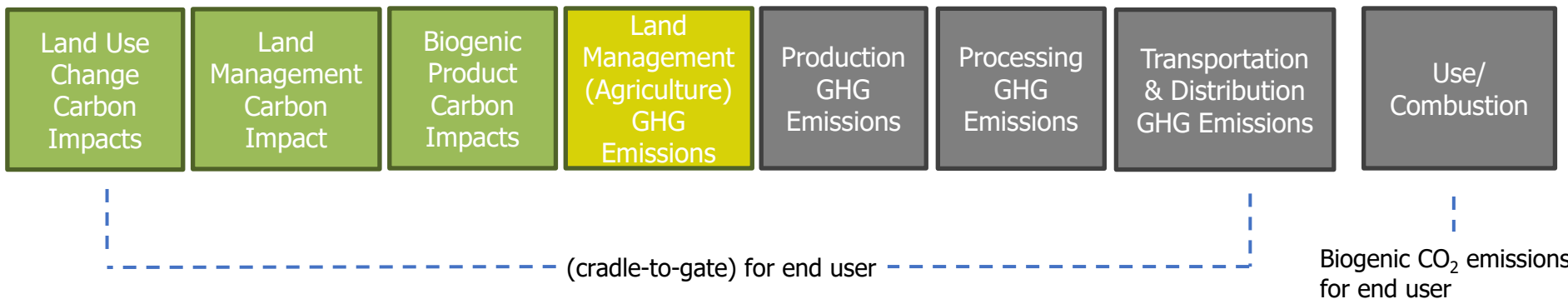
Carbon Pools	No accounting of CO <sub>2</sub> removals (if criteria are not met)	Temporary CO <sub>2</sub> removals (if criteria met)	Long-term CO <sub>2</sub> removals (if criteria met)
Land-based			
Geologic			
Product			

## Land sector GHG impacts

Direct GHG impacts from land management:

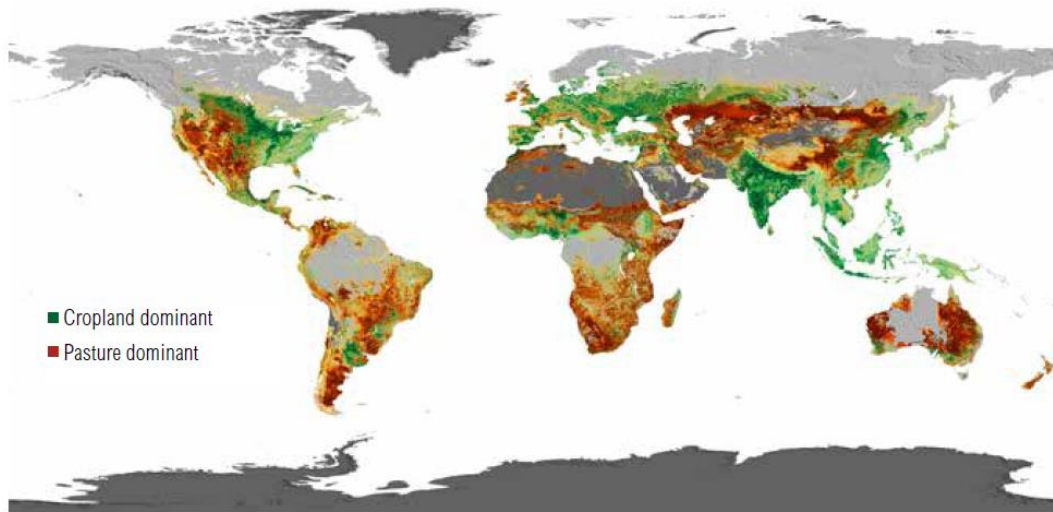


Indirect GHG impacts from biogenic product consumers:





# Land use change carbon impacts



## Scope 1 and Scope 3

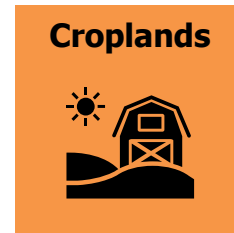
- Account for and report on land use change emissions on lands owned controlled by the reporting company or within their value chain
- Report impacts at both the level of direct suppliers and sourcing regions
- Metrics
  - Direct land use change emissions
  - Statistical land use change emissions

## Land Tracking Category

- Account for and report on the global impacts of land use
- Metrics
  - Indirect land use change emissions (t CO<sub>2</sub>e)
  - Carbon opportunity cost (t CO<sub>2</sub>e)
  - Land occupation (ha)

## Land management carbon stock changes

- Reporting guidance for biogenic accounting
  - CO<sub>2</sub> emission → where net carbon stock decreases occur
  - CO<sub>2</sub> removals → where net carbon stock increases occur, in accordance with criteria for reporting removals (in development)
- Methods under consideration
  - Carbon stock change factors
  - Model-based approaches
  - Remote sensing-based approaches
  - Measurement-based approaches
  - Hybrid approaches



**Biomass**



**Dead  
Organic  
Matter**



**Soil**



# Corporate Land and Carbon Watch Use Case

Disclosure

## GHG Programs:

**CDP** Reporting corporate GHG inventories

## SBTi

Reporting progress toward corporate climate/land targets

Accounting Framework

## Inventory:

Scope 1, 2 and 3 GHG Inventories

Land Tracking Category

Targets across scopes and other reporting categories

Other reporting categories and information

Monitoring

## Metrics:

Land Use Change Metrics

Land Management Carbon Metrics

Land Management GHG Emissions

Other GHG Emissions

## Data:

Land Data

- Forest cover change
- Land use change

Carbon Data

Other Land Management Data

## Project timeline

Activities	2020				2021				2022			
	Q1	Q2	Q3	Q4	Q1	Q2	Q3	Q4	Q1	Q2	Q3	Q4
Convene stakeholder groups												
Technical working group discussions												
Develop first draft												
<b>Stakeholder review</b>												
Develop second draft												
<b>Pilot testing</b>												
Develop third draft												
<b>Stakeholder review</b>												
Publish final guidance												

- We welcome your inputs; if interested please [sign up](#) for one of our stakeholder groups:
  - **Review Group**
  - **Pilot Testing Group**

## Immediate Next Steps

- In mid-2021, we will enter the pilot testing phase
- We are currently recruiting companies to join the pilot group across a wide range of:
  - Industries (agriculture, forestry, consumer goods)
  - Geographical regions
  - Business goals (tracking performance, setting targets, enhancing transparency, etc.)
- We invite any interested party to join over 100 companies that have already registered interest in pilot testing the guidance

# THANK YOU

Matt Ramlow

[Matt.Ramlow@wri.org](mailto:Matt.Ramlow@wri.org)

Jessica Zionts

[Jessica.Zionts@wri.org](mailto:Jessica.Zionts@wri.org)