



CDP CAPITAL MARKETS

Understanding climate risks and maximizing financial rewards: The benefits for investor signatories

“For nearly 20 years, CDP has been working with investors, companies and governments to drive industrial-scale environmental disclosure on climate change, water security and deforestation. Our disclosure framework and database is the foundation of environmentally-focused investing and lending, and the data disclosed through the CDP platform provides the capital markets with high quality, consistent and comparable data at scale, in line with the TCFD recommendations. Last year, more than 50 percent of the largest listed OECD companies by market cap reported to CDP. Our global data from companies and cities, coupled with the insights and research we develop, helps capital market actors engage with companies and make more informed financial decisions, and ultimately helps us drive a more sustainable future. We look forward to partnering with you.”

Emily Kreps, Global Director Capital Markets





As a sustainable asset manager, Union Investment is interested in the level of awareness and management of these topics within companies and sectors. CDP data allows us not only to compare companies' commitments and performance but to assess whether middle- and long-term strategies are credible. Without companies' disclosures via CDP, the process to gather and analyze data, at the scale and depth that CDP dives into, would be cumbersome for Union Investment as well as for other asset managers.

Union Investment



INTRODUCTION

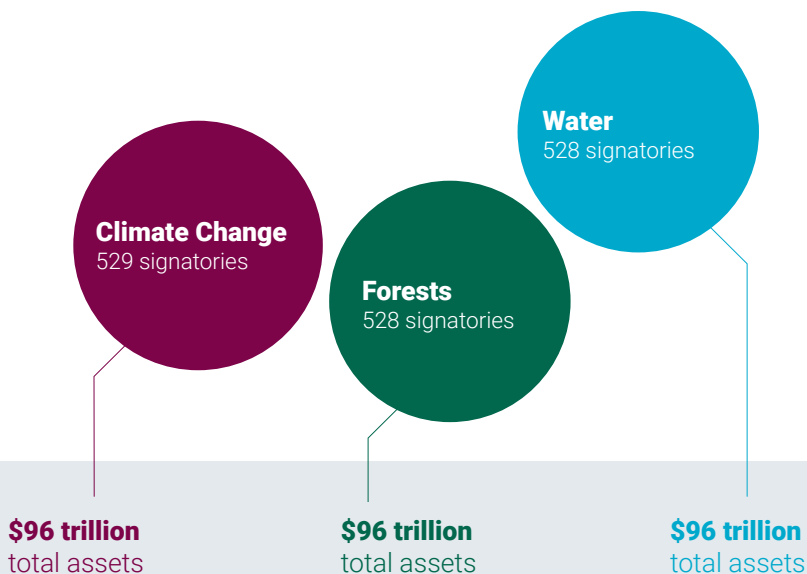
CDP is a leading global non-profit working to secure a thriving economy that works for people and planet. CDP holds the largest collection of primary carbon, water and deforestation information, and focuses investors, companies and cities on making the right choices now by enabling them to measure, understand and address their environmental impact.

CDP aims to make environmental disclosure mainstream and to use the insight gathered from these companies and cities to drive urgent action towards a climate safe, water secure future for all - CDP is the largest solicitor of direct, reported, primary environmental information worldwide.

CDP's global disclosure system equips investors with the data needed to engage with portfolio companies on their environmental impact and financial institutions with reliable, comparable data to base lending decisions on. Capital market actors are better able to mitigate risks associated with increasing climatic uncertainty, including physical, reputational and regulatory risks. Companies are better positioned to respond, building resilience throughout their own business and value chains.

Last year, companies representing more than 50 percent of the G20's combined market capitalization reported climate-related data to CDP.

CDP has gathered broad support for environmental disclosure from hundreds of investors around the world.



SIGNATORY BENEFITS

Promote industrial-scale environmental disclosure and engagement, aligned with the TCFD



Public recognition of your commitment to engaging with companies on environmental issues



Regular **disclosure status updates** during the disclosure period, as well as **newsletters** on the latest developments across CDP's programs worldwide and **insight webinars**



Opt in to **unique engagement initiatives** such as the Non-Disclosure Campaign and the Science-Based Target Campaign to drive further environmental action



Help **satisfy PRI Principles 1-4**; relating to ESG investment analysis, active ownership, corporate disclosure and investor collaboration



Unlimited access, via Excel, to **current and historical datasets** on company reported data, **CDP scores** for climate change, forests and water security, plus access to scores via Bloomberg



Modelled **scope 1, 2 & 3 emissions data** set for more than 5,400 companies from the MSCI ACWI & CDP's high impact sample

\$15k

Insights and tools available at preferential rates to signatories, such as our award-winning Climetrics and Investor Research reports, as well as our new Temperature Ratings.

**Speak to your
account manager
to purchase**

PROGRAM DETAILS

1. Support

CDP's Capital Markets team supports its signatories with access to CDP data, updates regarding disclosure, regional insights and relevant invitations to initiatives that further support corporate disclosure.

2. Price

The signatory administrative fee is an annual rate of \$1475 for investors with more than \$1bn of assets, and \$975 for investors with less than \$1bn of assets.

3. How do I join?

Please contact your regional account manager as detailed in the contacts section at the end of this brochure or investor@cdp.net.

SIGNATURE PRODUCTS

Climetrics

Climetrics is the **world's first fund rating** that enables investors to **integrate climate impact into their investment decisions**. Covering equity funds and ETFs in Europe worth almost €16 trillion (31% of the global mutual fund market), it provides investors with a rating "issued" on a scale of one to five green leaves. It was developed by two recognized climate specialists: CDP and ISS-Ethix Climate Solutions, part of the responsible investment arm of Institutional Shareholder Services Inc.

Top-rated funds can be found for free on climetrics-rating.org.

Matchmaker platform

The Matchmaker platform's goal is to ensure **cities have access to project development services and private capital to meet ambitious climate goals**. As an add-on to the investor signatory package, subscribers receive access to an online database for project-level municipal information, as well as a platform for ESG analysis of municipal climate risks and mitigation activities. Matchmaker's online dashboard details CDP cities' climate disclosure and risk mitigation activities.

For further information on the benefits of Matchmaker, please visit the program page: cdp.net/en/cities/matchmaker

Temperature Ratings

To help investors to **benchmark, communicate and reduce the temperature of their portfolios and products**, CDP's temperature ratings dataset provides a temperature pathway for thousands of global companies, based on emission reduction targets covering all relevant emissions in a company's value chain. The temperature ratings reflect the long-term global warming potential if global GHG emissions would reduce at the same pace as the company.

CDP temperature ratings give investors a clear, science-based and uniform standard for taking and measuring action towards a sustainable economy.

For more information, please visit: cdp.net/en/investor/temperature-ratings

SIGNATURE PRODUCTS

Greenhouse Gas (GHG) Modelled Emissions Dataset

CDP's GHG modelled emissions dataset includes reported and estimated emissions for Scope 1, location-based and market-based Scope 2, Scope 3, Scope 1 + 2 revenue intensity; and fuel and steam, heat, electricity & cooling (SHEC) data. The dataset models emissions for the Carbon Action companies, a group of the highest-emitting public companies on which the investor-led Carbon Action Initiative focuses, and constituents of the MSCI ACWI, a widely used international index covering around 85% of the investable equity universe, for a total sample of over 5,400 companies.

More information on the dataset and methodology can be found here:

cdp.net/en/investor/ghg-emissions-dataset

Investor Research

CDP's award-winning **sector research** aims to provide investors with the best and most tailored environmental data in the market. Reports cover 10 global sectors and analyse how major companies within those sectors are positioned to transition to a low carbon economy.

Find out more about our sector research on the dedicated page:

cdp.net/en/investor/sector-research

COLLABORATIVE ENGAGEMENT PLATFORMS

Non-Disclosure Campaign

Our annual Non-Disclosure Campaign offers investors the opportunity to actively target companies that have received the CDP disclosure request on behalf of investors but have not provided a response. The objective of the campaign is to drive further corporate transparency around climate change, deforestation and water security, by encouraging companies to respond to CDP's disclosure request.

For more information:

cdp.net/en/investor/engage-with-companies/non-disclosure-campaign

Science-Based Targets Campaign

The CDP Science-Based Targets (SBTs) Campaign offers CDP investor signatories the opportunity to play a key role in accelerating the adoption of science-based climate targets in the corporate sector, by collaboratively engaging companies on this matter.

This unique campaign builds on CDP's tried and tested collective engagement mechanism – and our experience as one of the founding partners of the Science-Based Targets initiative (SBTi) – to accelerate the adoption of science-based targets in the corporate sector.

cdp.net/en/investor/engage-with-companies/cdp-science-based-targets-campaign

CONTACTS

CDP Capital Markets Worldwide

investor@cdp.net

CDP Capital Markets North America

investor-na@cdp.net

CDP Capital Markets Europe

Laurent.Babikian@cdp.net

CDP Capital Markets Australia, New Zealand, Hong Kong, SE Asia

australianz@cdp.net

CDP Capital Markets Japan

Kyoko.Narita@cdp.net

CDP Capital Markets Latin America

Diogo.Negrao@cdp.net

CDP UK

4th Floor Plantation Place South

60 Great Tower Street

London, EC3R 5AD

United Kingdom

Tel: +44 (0) 203 818 3900

@cdp

www.cdp.net

info@cdp.net